



Palmerston Crescent, Palmers Green, London, N13  
£1,250 Per Calendar Month

**Anthony Webb**  
ESTATE AGENTS

# Palmerston Crescent, Palmers Green, London, N13

A single tenant or couple wanted for newly decorated UNFURNISHED studio flat located close to Palmers Greens shops and transport facilities.

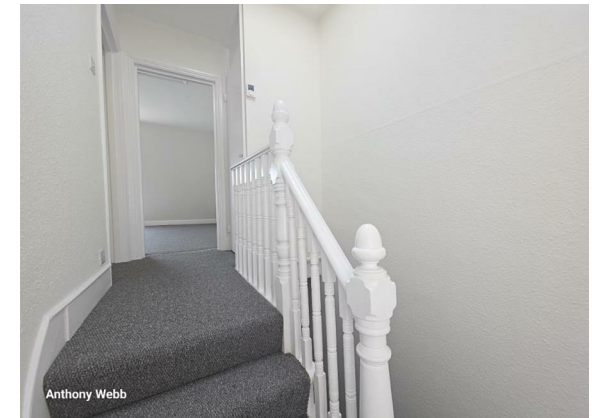
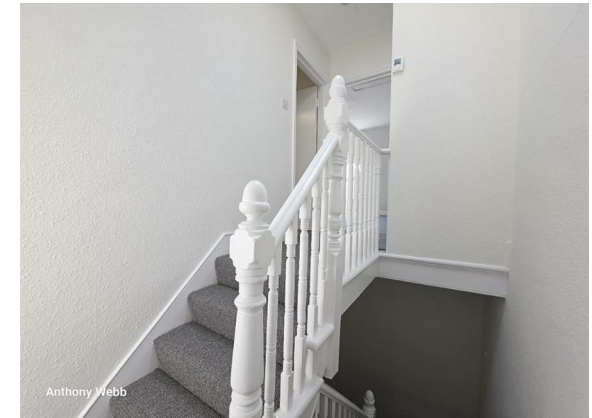
A spacious studio flat occupying the 2nd floor (top) of this Edwardian building. The flat is ideally located for Palmers Green's shops, restaurants, bus routes and mainline station. Benefits include a spacious living/sleeping area, kitchen with appliances, shower room, new carpets, gas central heating and double glazing.

Enfield council band B

5 weeks deposit £1442

Minimum annual household income to meet referencing criteria £37,500

- 2nd floor converted studio flat
- Close to shops/station
- Spacious living/sleeping area
- Modern kitchen
- Modern shower room
- Offered part furnished
- Double glazed
- Available from 20th of September





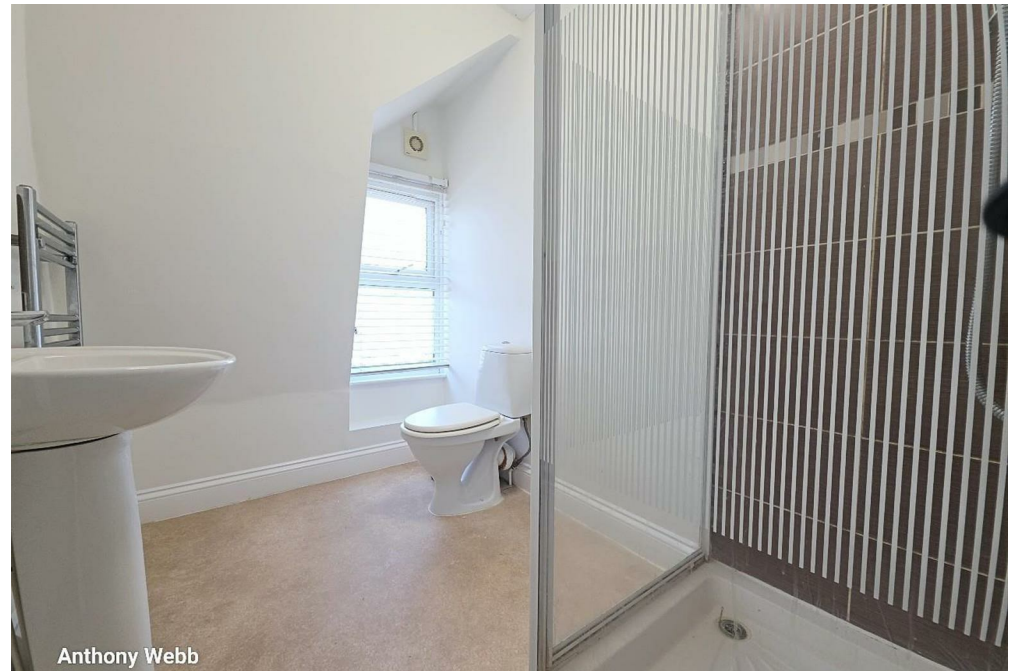
Anthony Webb



Anthony Webb



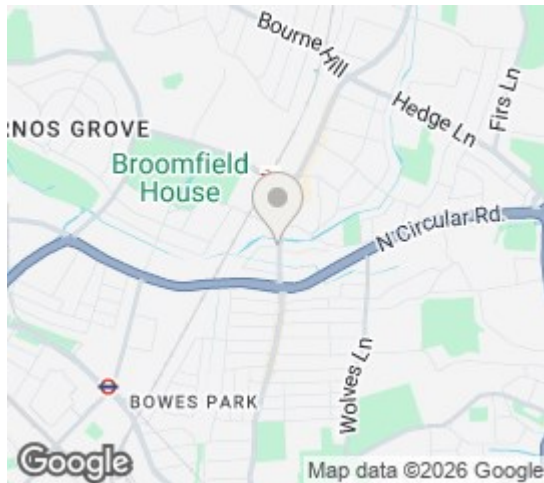
Anthony Webb



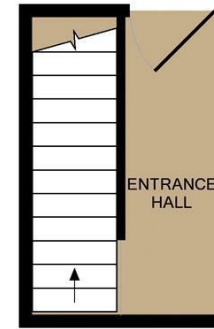
Anthony Webb

Palmerston Crescent  
 Palmers Green  
 London  
 N13 4UA

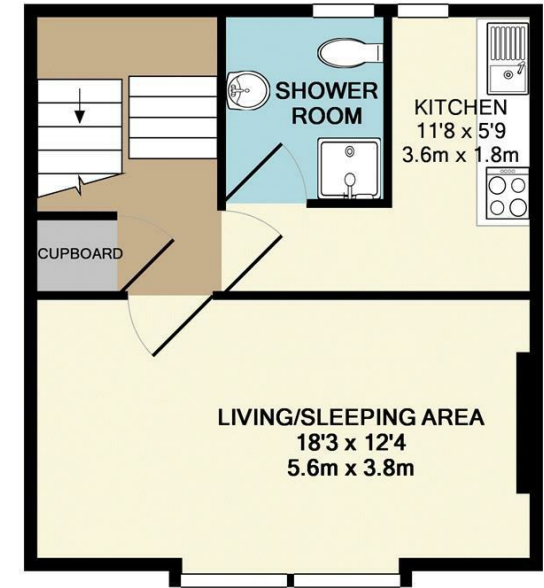
Tenure:  
 Gross Internal Area: 452.00 sq ft



Energy Efficiency Rating		Current	Potential
Very energy efficient - lower running costs			
(92 plus) A			
(81-91) B			
(69-80) C			
(55-68) D			
(39-54) E		56	62
(21-38) F			
(1-20) G			
Not energy efficient - higher running costs			
England & Wales		EU Directive 2002/91/EC	
Environmental Impact (CO <sub>2</sub> ) Rating		Current	Potential
Very environmentally friendly - lower CO <sub>2</sub> emissions			
(82 plus) A			
(61-81) B			
(50-80) C			
(35-48) D			
(21-34) E		54	61
(1-20) F			
(1-20) G			
Not environmentally friendly - higher CO <sub>2</sub> emissions			
England & Wales		EU Directive 2002/91/EC	



1ST FLOOR



2ND FLOOR

TOTAL APPROX. FLOOR AREA 452 SQ.FT. (42.0 SQ.M.)

Whilst every attempt has been made to ensure the accuracy of the floor plan contained here, measurements of doors, windows, rooms and any other items are approximate and no responsibility is taken for any error, omission, or mis-statement. This plan is for illustrative purposes only and should be used as such by any prospective purchaser. The services, systems and appliances shown have not been tested and no guarantee as to their operability or efficiency can be given  
 Made with Metropix ©2019

Property particulars as supplied by Anthony Webb Estate Agents are set out as a general outline in accordance with the Property Misdescriptions Act (1991) only for the guidance of intending purchasers of lessees, and do not constitute any part of an offer or contract. Details are given without any responsibility, and any intending purchasers, lessees or third parties should not rely on them as inspection or otherwise as to the correctness of each of them. We have not carried out a structural survey and the services, appliances and specific fittings have not been tested. All photographs, measurements, floor plans and distances referred to are given as a guide only and should not be relied upon for the purchase of carpets or any other fixtures statements or representations of fact, but must satisfy themselves by or of fittings, gardens, roof terraces, balconies and communal gardens as well as tenure and lease details cannot have their accuracy guaranteed for intending purchasers. Lease details, service ground rent (where applicable) are given as a guide only and should be checked and confirmed by your solicitor prior to exchange of contracts. no person in the employment of Anthony Webb has any authority to make any representation or warranty whatever in relation to this property.

348 Green Lanes, Palmers Green, London N13 5TJ  
 020 8882 7888  
 palmersgreen@anthonywebb.co.uk  
 anthonywebb.co.uk

